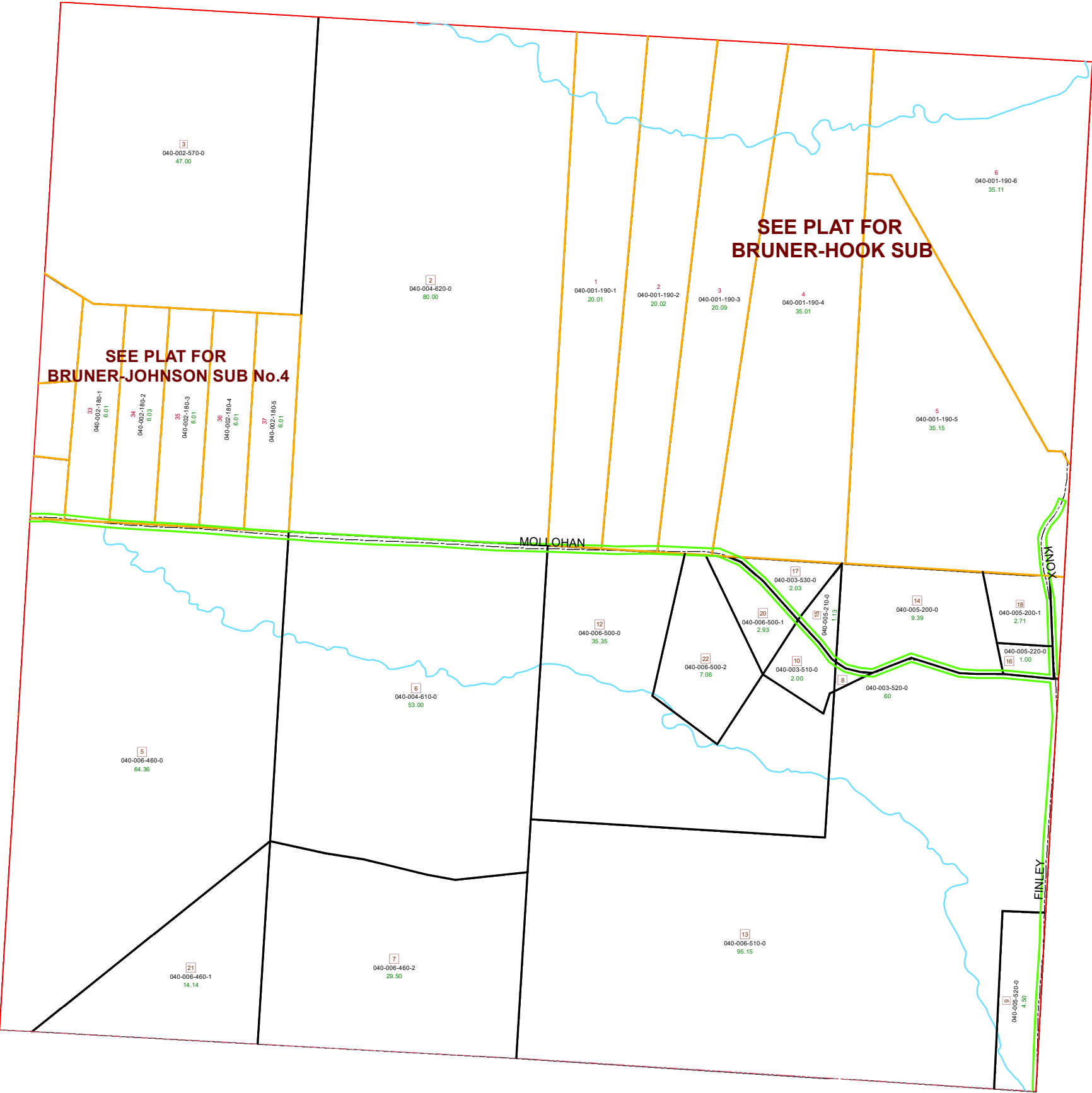
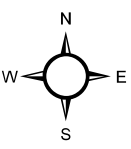


# DEERFIELD TOWNSHIP SECTION 34 R13 TWP 9 MORGAN COUNTY, OH

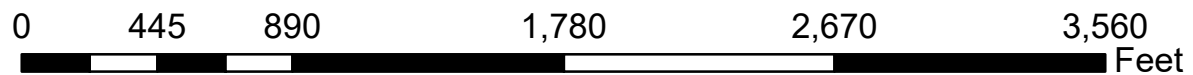


PIN	VOL	PAGE	Owner	LegalDescr	Acres
040-004-620-0	OR64	765	LEMON CHRISTOPHER L & JENNIFER E	R13 T09 S34 SD 2	80
040-005-220-0	OR225	19	MATAS ANDREW G TRUSTEE	R13 T09 S34 SD 16	1
040-005-200-1	OR225	19	MATAS ANDREW G TRUSTEE	R13 T09 S34 SD 18	2.714
040-005-210-0	OR56	759	MILLER MARGARET E	R13 T09 S34 SD 15	1.13
040-005-200-0	OR56	759	MILLER MARGARET E	R13 T09 S34 SD 14	9.386
040-003-530-0	D.V 193	66	MOLLAHAN CHARLES E & BERNICE	R13 T09 S34 SD 17	2.03
040-003-520-0	D.V 144	421	MOLLAHAN CHARLES EUGENE	R13 T09 S34 SD 8	0.6
040-003-510-0	D.V 144	421	MOLLAHAN CHARLES EUGENE	R13 T09 S34 SD 10	2
040-006-500-1	D.V 193	66	RUCKER DAVID W & ALISON L	R13 T09 S34 SD 20 S	2.932
040-006-500-2	OR220	1240	RUCKER DAVID W & ALISON L	R13 T09 S34 SD 22 S	7.068
040-005-520-0	D.V 205	397	STANLEY LARRY	R13 T09 S34 SD 9	4.5
040-004-610-0	OR48	103	STRODE DANIEL W & PATRICIA E	R13 T09 S34 SD 6	52.998
040-006-510-0	OR212	2924	WILSON JERRY R & AZCAL E	R13 T09 S34 SD 13	95.15
040-006-500-0	OR212	2924	WILSON JERRY R & AZCAL E	R13 T09 S34 SD 12	35.34
040-006-460-1	OR212	2924	WILSON JERRY R & AZCAL E TRUSTEES	R13 T09 S34 SD 21	14.136
040-006-460-2	OR212	2924	WILSON JERRY R & AZCAL E TRUSTEES	R13 T09 S34 SD 7	29.5
040-006-460-0	OR224	953	WILSON WAYNE T TRUSTEE	R13 T09 S34 SD 5	64.36
040-002-570-0	OR223	1548	WISEMAN RUSSELL E & DEE ANN	R13 T09 S34 SD 3 SU	47



Boundaries		Future Split	Parcel
County	Lot	Hydro	ROW
Section	Township	Roads	

Source: Morgan County Engineer's Office  
 Author: Marcia Wolfe  
 Date: 6/2/2020



Disclaimer: The information that these maps contains is for reference purposes only. Please bring any errors to the attention of the Engineer's Office staff.  
 Thank you